



Product Summary

The ZMS030N06HB combines advanced trench MOSFET technology with a low resistance package to provide extremely low $R_{DS(ON)}$.



device constructure
 $R_{DS(ON)}$ to minimize conduction loss



Synchronous Rectification for AC-DC/DC-DC converter
 Oring switches
 Power Tools

Part NO.	
Marking	
Packing Information	REEL TAPE
Basic ordering unit (pcs)	500

$T_C = 25$

Parameter	Symbol	Rating	Unit
Drain-Source Voltage	V_{DS}	60	V
Gate-Source Voltage	V_{GS}	± 20	V
Continuous Drain Current	$I_{D@TC=25}$	150	A
	$I_{D@TC=75}$	114	A
	$I_{D@TC=100}$	94	A
Pulsed Drain Current	I_{DM}	400	A
Total Power Dissipation($TC=25$)	$P_D@TC=25$	150	W
Operating Junction Temperature	T_J	-55 to 150	
Storage Temperature	T_{STG}	-55 to 150	
Single Pulse Avalanche Energy@L=0.1mH	E_{AS}	180	mJ
Avalanche Current@L=0.1mH	I_{AS}	60	A



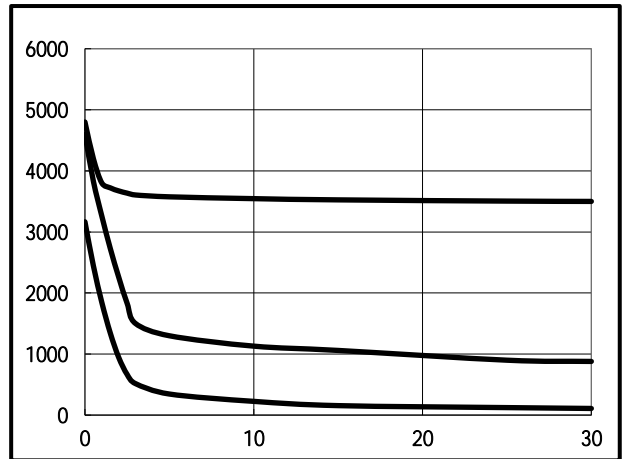
Thermal resistance

Parameter

Symbol



Fig.



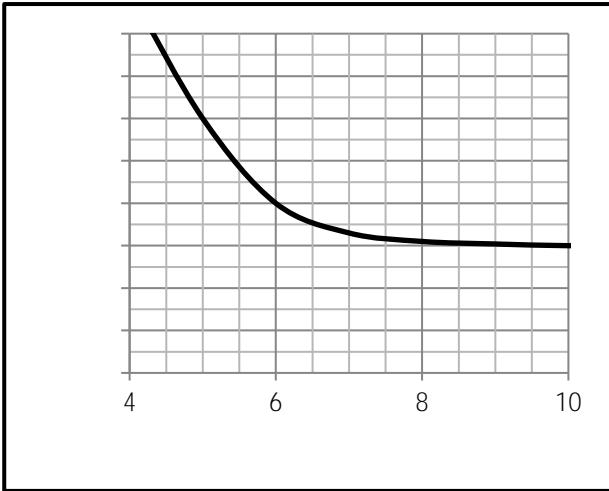


Fig.9 Switching Time Measurement Circuit

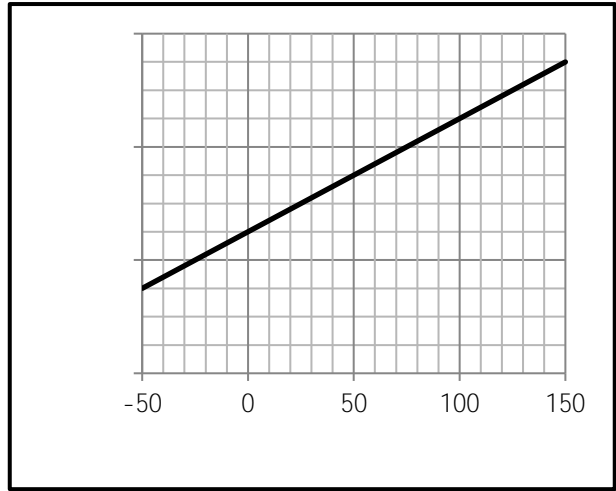


Fig.10 Gate Charge Waveform

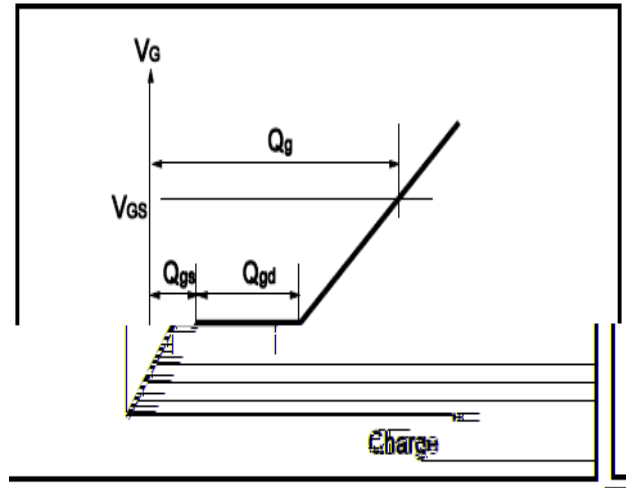
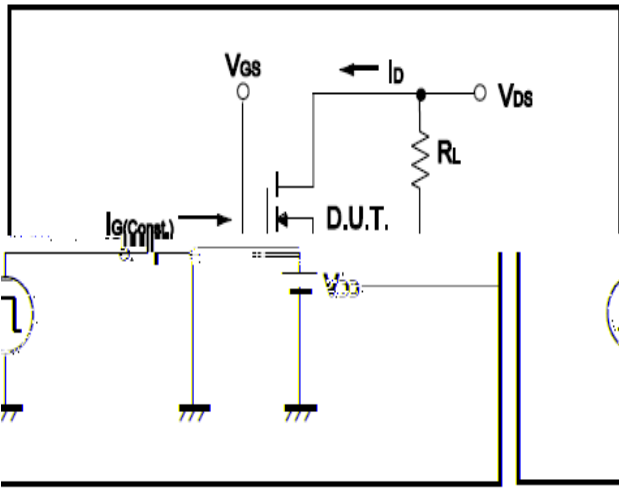


Fig.11 Switching Time Measurement Circuit

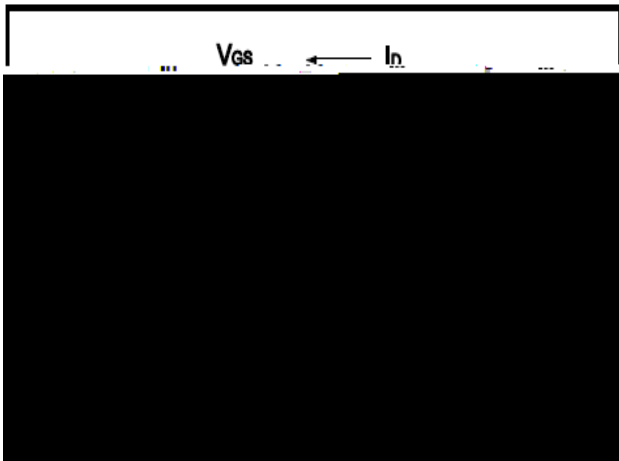
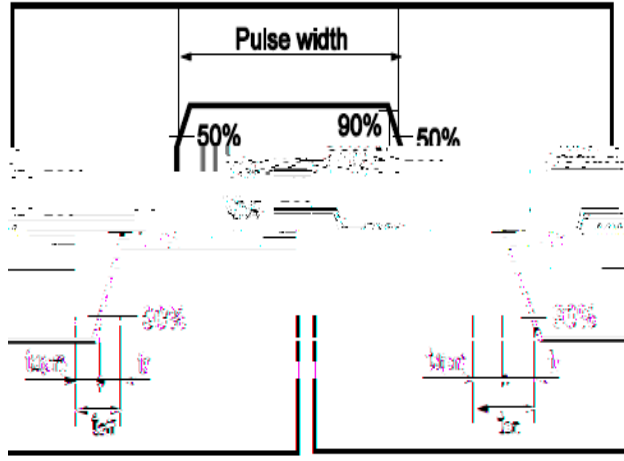


Fig.12 Gate Charge Waveform





Dimensions (TO-220)

Unit mm

SYMBOL	MIN	TYP	MAX	SYMBOL	MIN	TYP	MAX
A	4.42		4.72	E	8.99		9.29
B	1.22		1.32	e1	2.44		2.64
b	0.76		0.86	e2	4.98		5.18
b1	1.22		1.32	L1	15.19		15.79
b2	0.33		0.43	L2	2.29		2.79
C	1.22		1.32	L3	1.3		1.75
D	9.95		10.25				

