



Input capacitance	Ciss	f = 1MHz V _{DS} =25V	-	560	-	pF
Output capacitance	Coss		-	81	-	
Reverse transfer capacitance	Crss		-	49	-	
Total gate charge	Qg	V _{DD} = 25V I _D = 5A V _{GS} = 10V	-	10		

N Channel characteristics curve

Fig.1 Power Dissipation Derating Curve

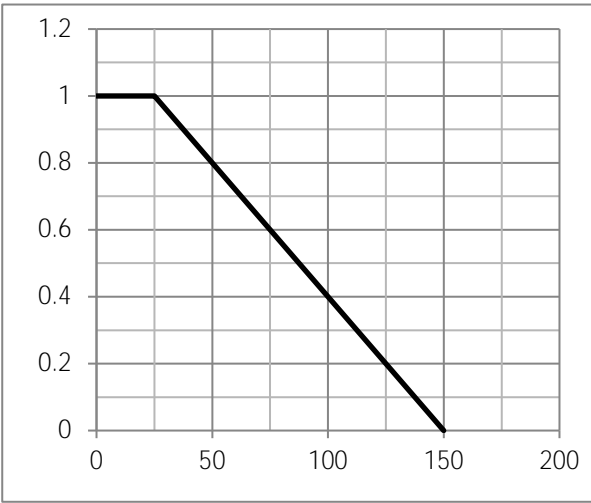


Fig.2 Typical output Characteristics

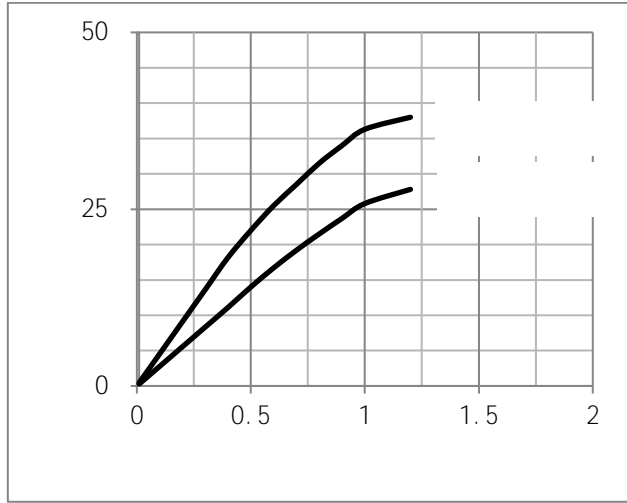


Fig.3 Threshold Voltage V.S Junction Temperature

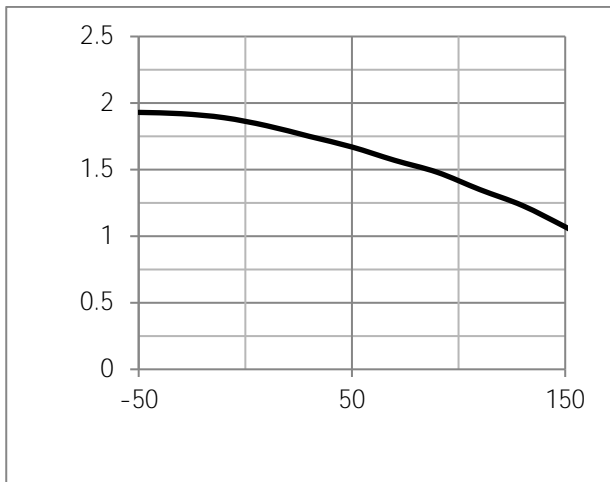


Fig.4 Resistance V.S Drain Current

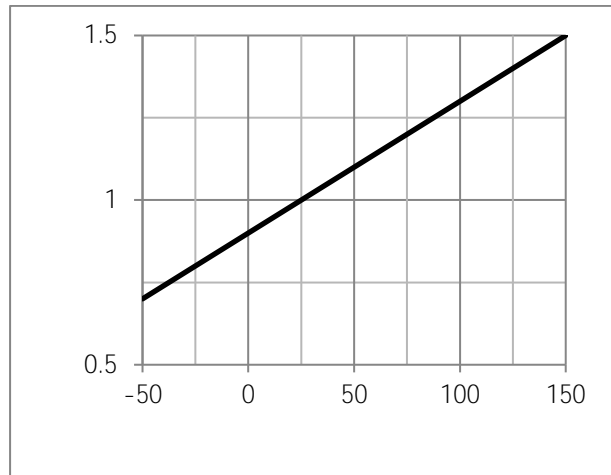
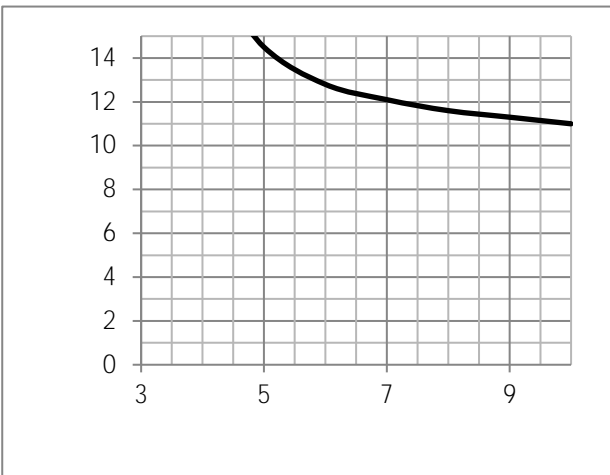
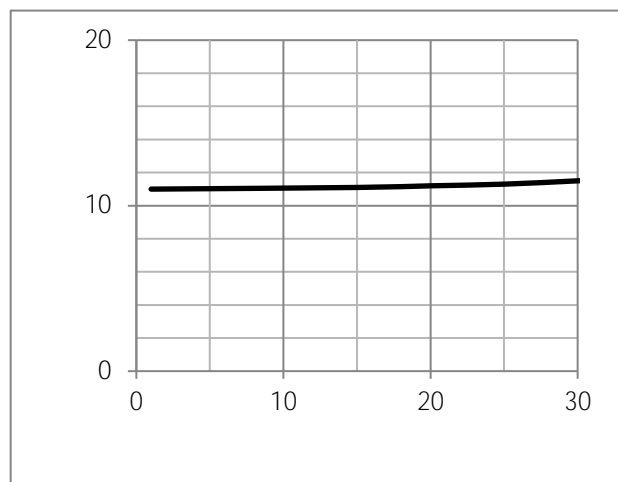


Fig.5 Avalanche Measurement Circuit

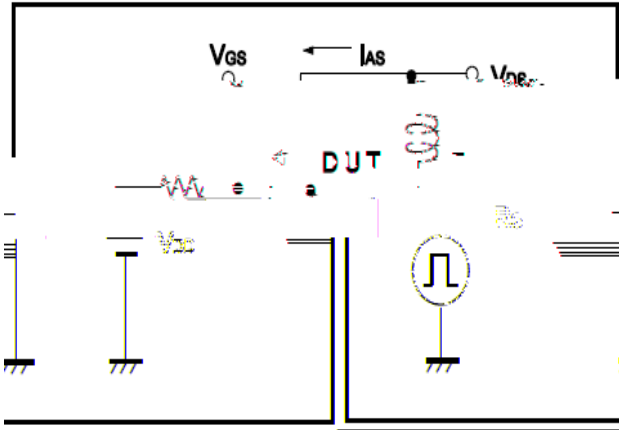
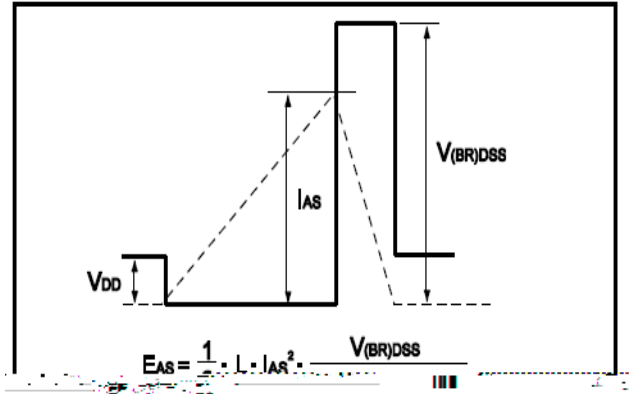


Fig.6 Avalanche Waveform





sions DFN5x6

