



The ZM280N06I

$T_C = 25$

Parameter	Symbol	Rating	Unit
Drain-Source Voltage	V_{DS}	60	V
Gate-Source Voltage	V_{GS}	± 20	V
Continuous Drain Current	$I_{D@TC=25}$	25	A
	$I_{D@TC=75}$	19	A
	$I_{D@TC=100}$	15.75	A
Pulsed Drain Current	I_{DM}	75	A
Total Power Dissipation	$P_D@TC=25$	50	W
Total Power Dissipation	$P_D@TA=25$	1.25	W
Operating Junction Temperature	T_J	-55 to 150	
Storage Temperature	T_{STG}	-55 to 150	
Single Pulse Avalanche Energy	E_{AS}	75	mJ

Fig.1

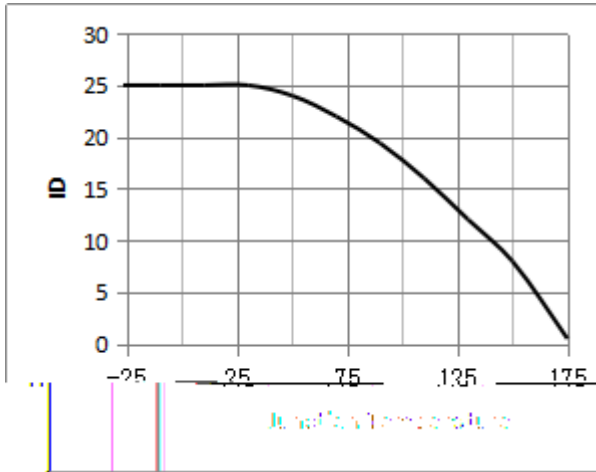


Fig.2 Typical output Characteristics

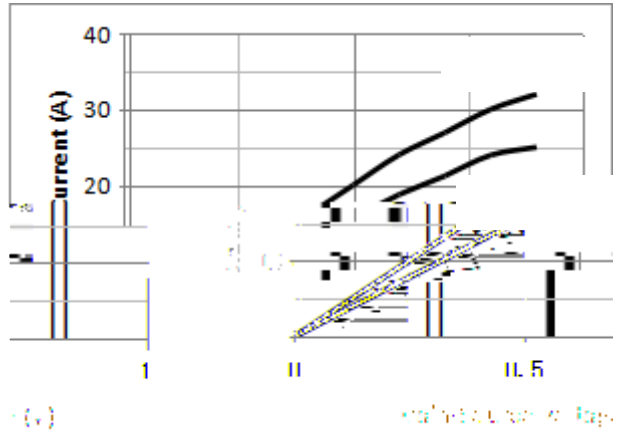


Fig.3 Threshold Voltage V.S Junction Temperature



Fig.4 Resistance V.S Drain Current

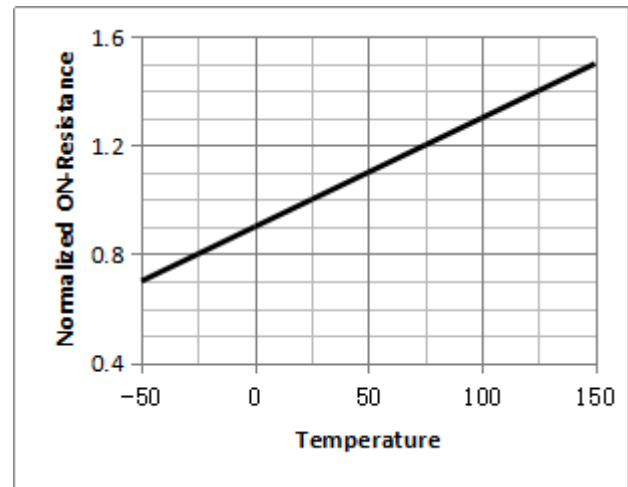
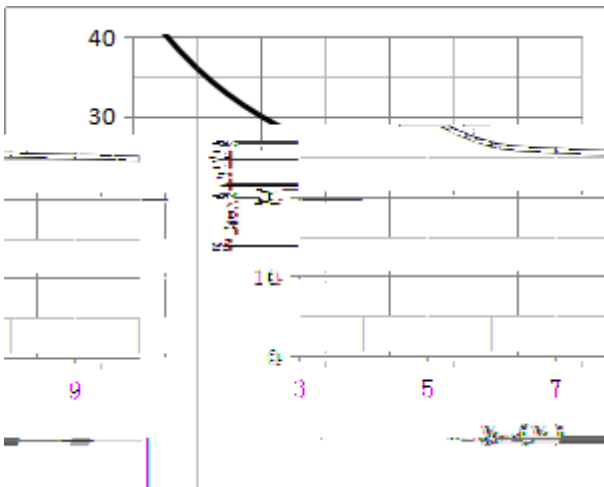
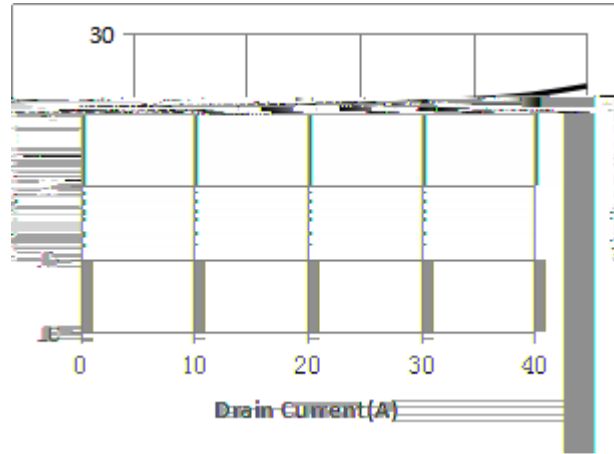


Fig.7 Switching Time Measurement Circuit

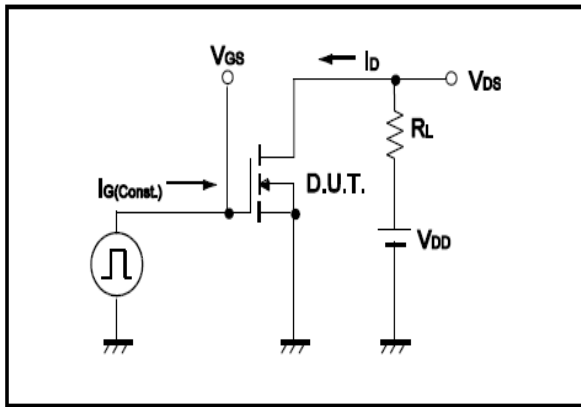


Fig.8 Gate Charge Waveform

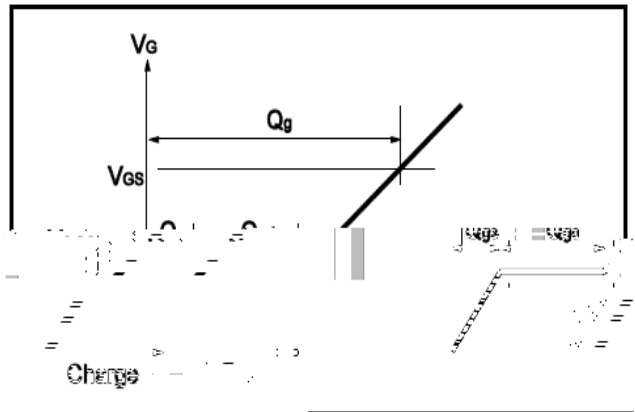


Fig.9 Switching Time Measurement Circuit

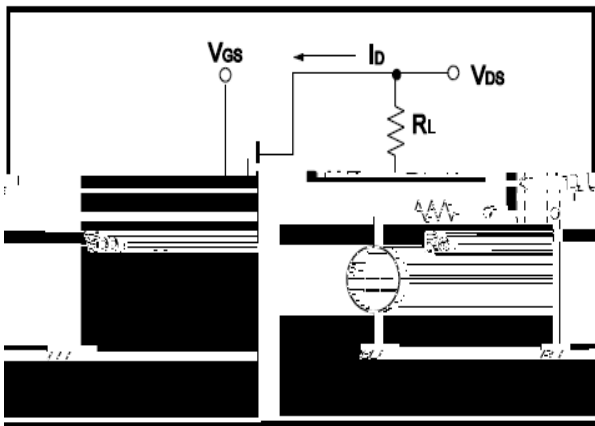


Fig.10 Gate Charge Waveform

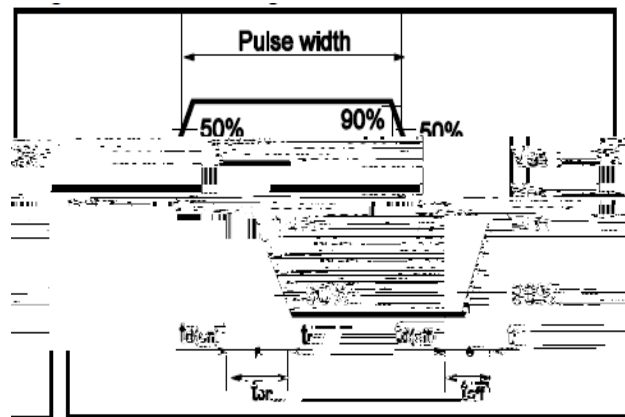


Fig.11 Avalanche Measurement Circuit

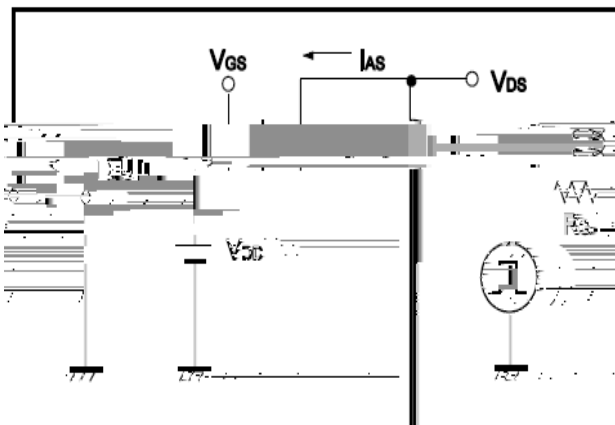
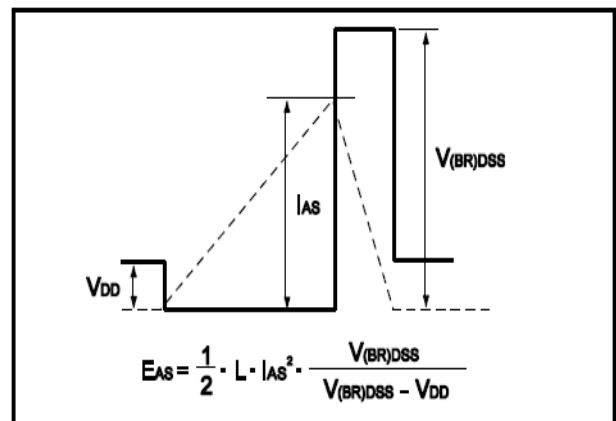


Fig.12 Avalanche Waveform





-251)

Unit mm

SYMBOL	min	max	SYMBOL	min
--------	-----	-----	--------	-----